

# Dialog IOT Smart ATM



## IOT Solutions for smarter ATM Site Management

Dialog Axiata PLC, Sri Lanka's premier connectivity provider and a leader in the telecommunication industry, has introduced a solution that further enhances the visibility of monitoring an ATM with novel features another first to enter the market. Dialog SMART ATM Monitoring solution allows you to monitor and observe real-time insights, power availability of your ATM network from a single central location. This dynamic solution has a graphical user interface that provides operators with complete visibility of the bank's entire ATM network.



## IOT Smart ATM Features

- IOT Smart ATM Features
- CEB (Grid) - Power Availability
- UPS Power Input Availability
- UPS Power Output Availability
- Generator - Power status
- CCTV DVR Power Availability
- Outdoor Light - ON/OFF Status
- Siren - Active/Inactive Status
- ATM Booth Back Door Sensor Status (Open/Close)
- Environment Status (Temperature & Humidity)
- Real-time Alerts (SMS / E-mail)



## Key Benefits



Realtime monitoring and data visibility



Cloud based managed service solution (Software-as-a-Service)



Accurate remote surveillance



Enhance ATM security



Central monitoring system with hierarchy-based user access



ATM environment monitoring to support proactive maintenance



Accurate identification of faults & failures



Supports Proactive maintenance

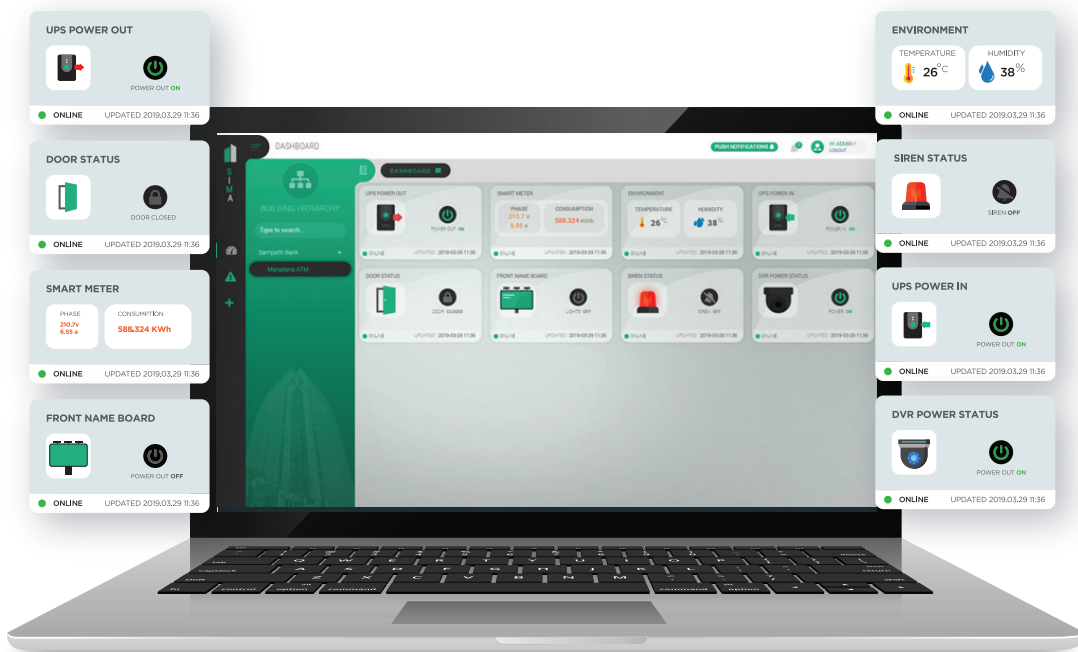


Additional level of monitoring and alerts



Fast and easy implementation

## iOT Smart ATM System Dashboard



For more details:



[www.dialog.lk](http://www.dialog.lk)



[business@dialog.lk](mailto:business@dialog.lk)